

Preface

The original JimmyBench™ was designed to upgrade or replace and improve upon your standard pool ladder. The JimmyBench has been carefully designed to fit inside the existing pool ladder rails when the rails are rotated in an outward direction.

To verify that the JimmyBench will work with your pool ladder, measure your existing pool ladder. The JimmyBench was designed to work with most standard stainless-steel or Safron ladders that have the rails set between 19 and 20 inches apart. The JimmyBench, when installed, is significantly wider than the original pool ladder. Please make sure that the pool ladder is far enough away from the corner of your pool to allow for the increase in the width.

Safety

- The JimmyBench has been designed specifically for straight-walled pools. The bench may not fit properly on curved-wall or round pools.
- All hardware that was used with the original ladder installation should be discarded. Only the supplied, new hardware should be used for assembly.



FALLING HAZARD

Particular care must be taken to secure all fasteners where noted, otherwise severe personal injury may occur



FINGER ENTRAPMENT

If not correctly followed, could result in personal injury



NO DIVING

The JimmyBench should never be used for diving of any kind

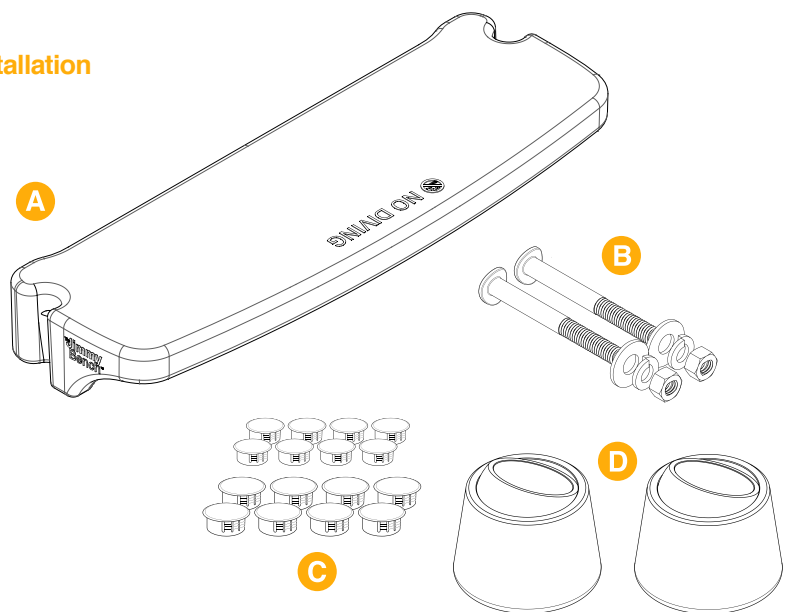
Tools Required

- 9/16" Wrench or Socket (commonly used nut size)
- 1/2" Wrench or Socket
- Pliers

Package Contents

Ensure that all components are included prior to installation

Item	Description	Qty
A	The JimmyBench	1
B	Ladder Bolts, Lockwashers, Nuts & Washers	2 ea.
C	Assorted Dome Plugs	1 pk
D	Ladder Bumper	2
E	Instruction Sheet	1



Scan the QR code to watch our installation video

1 Removal of the existing ladder and steps.

- Loosen the bolts that secure the ladder to the anchor sockets.
- Remove the pool ladder and steps from the pool and place on a clean, level surface.
- Utilizing a 9/16" or 1/2" wrench, remove each step tread and set aside. Wrench size varies based on manufacturer.

2 Installing the JimmyBench

- Align the JimmyBench to the existing ladder rails.
- Using the new hardware (B), insert a bolt through the ladder rail and through the bench in the two desired holes. Depth of bench varies based on holes utilized to secure bench to existing rails. **NOTE: Some rails may require larger 3/8" holes to be drilled to accommodate included hardware.**
- Secure with a washer, lock washer and nut using a 9/16" wrench. Repeat for the remaining hole.



3 Installing new ladder bumpers

- Remove the old ladder bumpers and discard.
- Slide the new pivoting ladder bumpers onto the ends of the ladder rails.

**The new ladder bumpers pivot within its base to allow the base to rest flat against the pool wall*

4 Plugging the opening holes in the ladder rails

- Using the dome plugs, item (C), press a plug into each of the remaining open holes in the ladder rail.

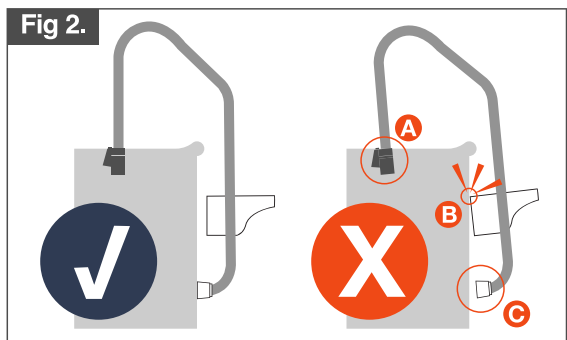
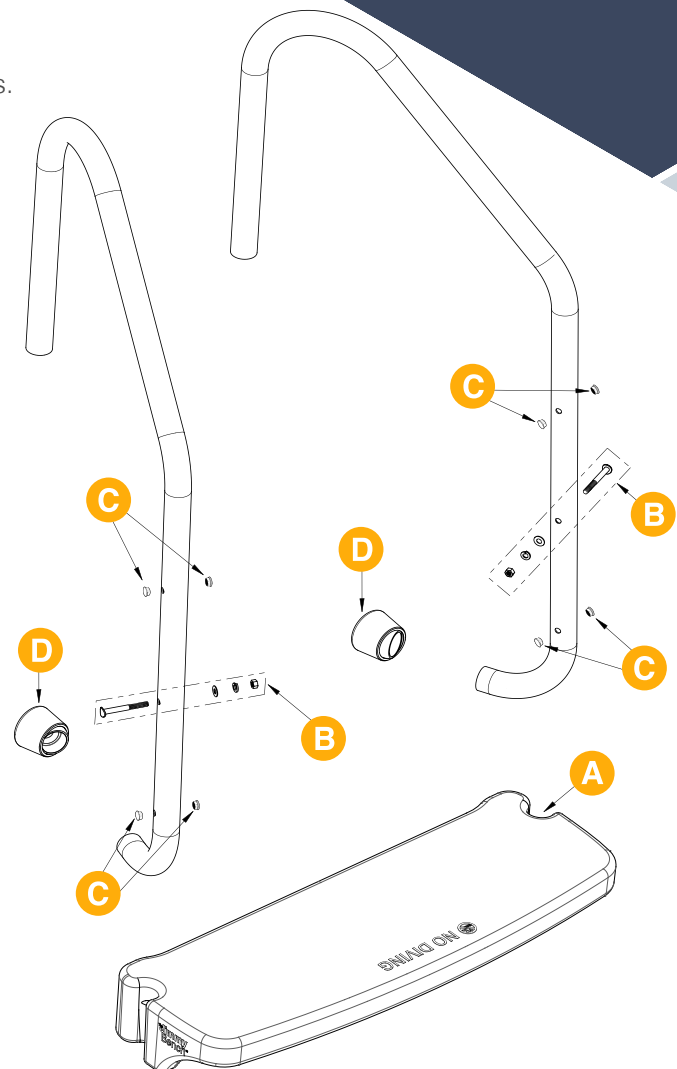


5 Re-installing the ladder rails with The JimmyBench

- Slide the ladder rails into the existing anchor sockets.
- Double-check the ladder bumpers to ensure that the base is resting parallel to the pool wall.

NOTE: It is important to make sure your JimmyBench is positioned correctly (See Fig 2). If the pivoting ladder bumpers are not resting on the pool wall (C) and the JimmyBench is not square to the pool wall, DAMAGE TO POOL LINERS OR OTHER POOL SURFACES MAY OCCUR (B). This may be due to settled or crooked anchor sockets in the patio (A). It is recommended you contact your pool professional to properly install your new JimmyBench.

- Using the 1/2" wrench or socket, retighten the anchor socket bolts.
- Slide the escutcheon plate down to cover the anchor sockets.



Scan the QR code to watch our installation video

Congratulations! Your new JimmyBench installation is complete.